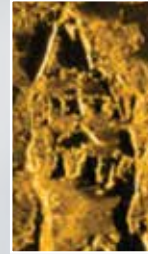


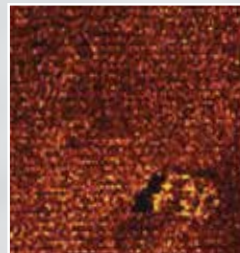
WHAT SETS EDGETECH APART?

ADVANCED TECHNOLOGY PROVIDING CLEARLY SUPERIOR IMAGING

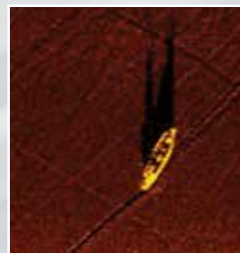
TRADITIONAL METHODS AND RESULTS:



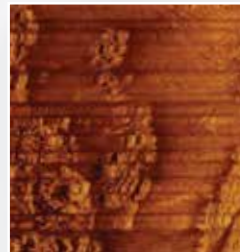
Continuous Wave (CW) Pulse



Single Pulse



Non-Dynamically Focused



Yaw Effects

EDGETECH TECHNOLOGY AND RESULTS:



Full Spectrum CHIRP



Multi-Pulse



Dynamically Focused



Software Compensated

EdgeTech is the industry leader in the design and development of advanced imaging sonar systems. Only EdgeTech offers a set of unique and exciting underwater imaging technologies including Full Spectrum® CHIRP Processing, Multi-Pulse technology, Dynamic Aperture and Dynamically Focused Arrays. Our proprietary Full Spectrum® CHIRP Processing enhances long range resolutions through improved signal-to-noise ratios. Multi-Pulse technology puts up to 4 pulses in the water simultaneously, thereby enabling either a 4 times survey speed increase over conventional side scan sonar systems, or a marked increase of pings on target, which leads to superior feature detection. EdgeTech's exclusive Dynamically Focused Arrays sharpen resolutions in the far field and enable better target identifications at longer ranges.

In addition to these pioneering technologies, our expertise in telemetry, compact & low-power electronics, modular designs and software programming allows us to provide unique and tailored solutions for platforms that include towed bodies, powered towed bodies, remotely operated vehicles (ROV), unmanned surface vehicles (USV), and unmanned underwater vehicles (UUV). We also have vast knowledge of acoustic positioning, navigation and control technologies that can easily be incorporated into any of EdgeTech solutions. For side scan sonar, sub-bottom profiling, and bathymetric solutions, either individually or in combinations, EdgeTech provides *Clearly Superior Imaging*.

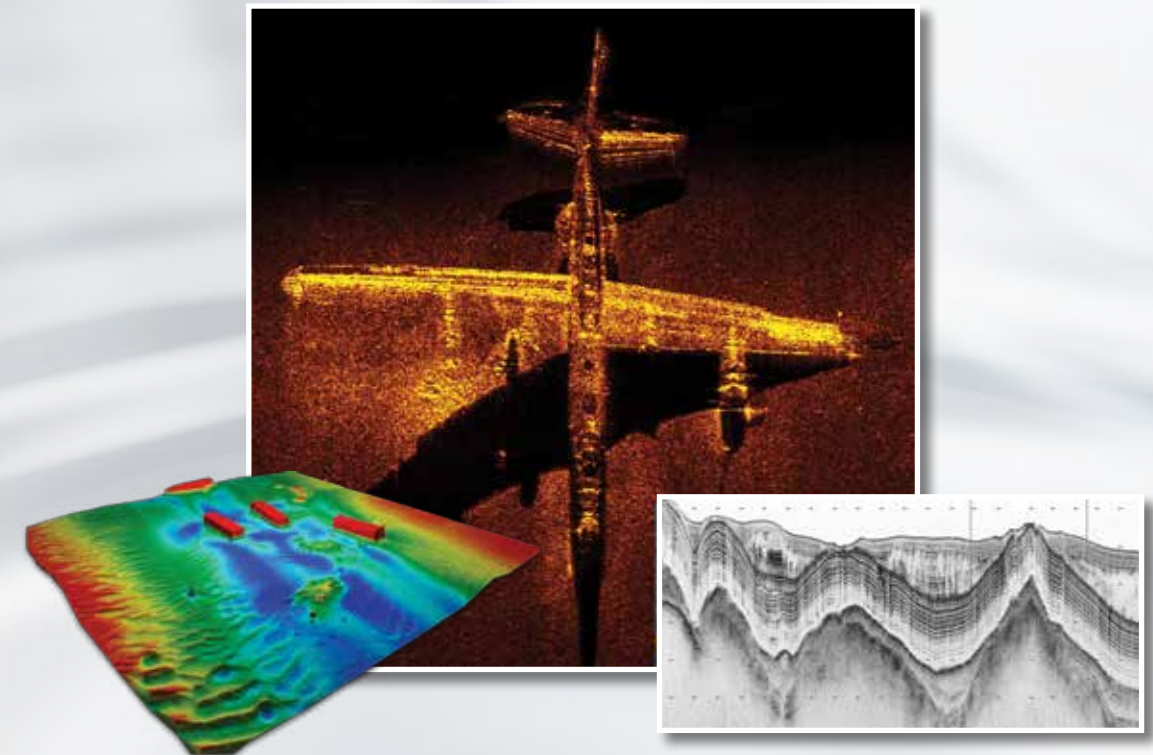
Acoustic Releases | USBL | MRU | Side Scan Sonar | Sub-bottom Profilers | Bathymetry | AUV & ROV Sonars | Combined & Customized Solutions

For more information please visit EdgeTech.com

info@edgetech.com | USA 1.508.291.0057

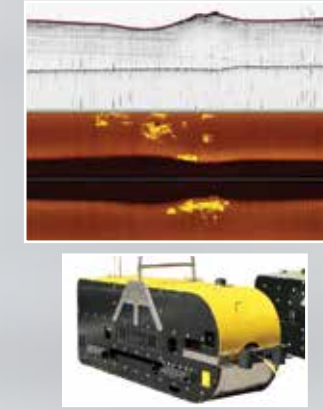
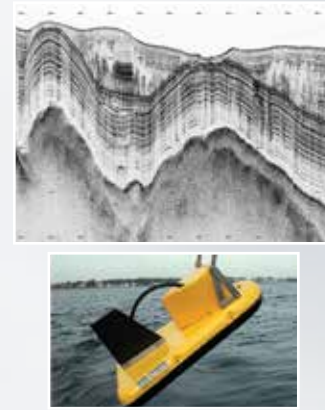
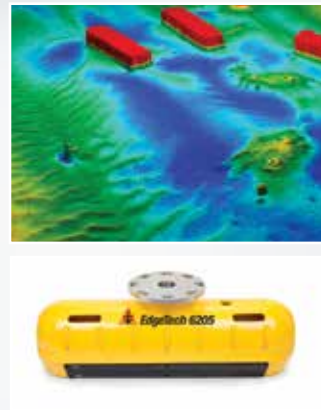
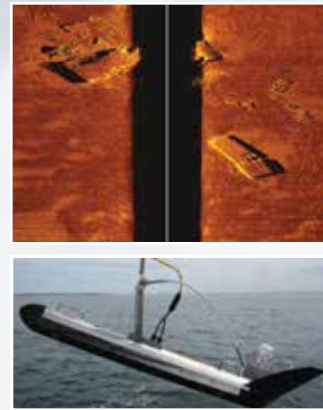
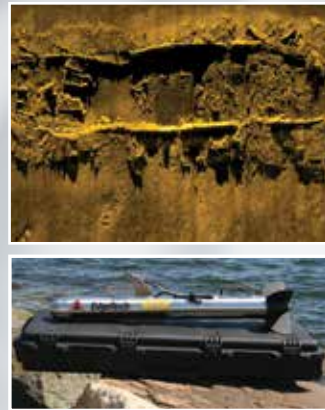
CLEARLY SUPERIOR IMAGING

SIDE SCAN SONAR | SUB-BOTTOM PROFILERS | BATHYMETRY
COMBINED & CUSTOMIZED SONAR SOLUTIONS



Acoustic Releases | USBL | MRU | Side Scan Sonar | Sub-bottom Profilers | Bathymetry | AUV & ROV Sonars | Combined & Customized Solutions

UNDERWATER ACOUSTIC IMAGING



Model Name	4125 Ultra High Resolution Lightweight, Portable	4200 Multipurpose Survey System	6205 Swath Bathymetry & Side Scan Sonar	3100/3200/3300 Sub-bottom Profiler Towed, Pole-Mount, Hull-Mount, Portable	2200/2205 Sonars for ROV, AUV, USV	2300 Combined Side Scan Sonar & Sub-bottom Profiler (with Optional Bathymetry)	2400 / Specials Deep Tows
Side Scan Sonar	√	√	√		√	√	√
Sub-bottom Profiler				√	√	√	√
Bathymetry (3-D)			√		√	√	√
Frequency Options Available	400 kHz/900 kHz 600 kHz/1600 kHz	100 kHz/400 kHz 100 kHz/600 kHz 300 kHz/900 kHz	550/1600 kHz Side Scan & 550 kHz bathymetry 230/550 kHz Side Scan & 550 kHz bathymetry 230/550 kHz Side Scan & 230 kHz bathymetry	500 Hz-24 kHz	Side Scan Sonar: 75 kHz to 1600 kHz Sub-bottom Profiler: 500 Hz to 24 kHz Bathymetry: 230 kHz or 550 kHz	Side Scan Sonar Tri-frequency: 120/410/900 kHz or 230/550/900 kHz Sub-bottom Profiler: 1-10 kHz and 2-16 kHz Bathymetry: Optional 230 kHz or 550 kHz	Side Scan Sonar: 75 kHz to 1600 kHz Sub-bottom Profiler: 500 Hz to 24 kHz Bathymetry: 230 kHz or 550 kHz
Depth Rating (meters)	200 m	2000 m	500 m	towfish 300 m, survey 6000 m	options to 6000 m	2000 m (3000 m optional)	options to 6000 m
Multi-Pulse Option Available		√			√		√
Dynamic Focusing Long Range and High Resolution		optional			optional		optional
Configurations available:							
Towfish	√	√		√		√	√
Pole Mount	√	√	√	√, hull-mount available			
Sample Applications:	<ul style="list-style-type: none"> Hydrographic Surveys Geological Surveys Search & Recovery Channel/Clearance Surveys Bridge/Pier/Harbor Wall Inspection Hull Inspections 	<ul style="list-style-type: none"> Hydrographic Surveys Archeological Surveys Cable and Pipeline Surveys Geohazard Surveys Geological/Geophysical Surveys 	<ul style="list-style-type: none"> Benthic Habitat Mapping Dredging Operations Marine Debris Search Military Rapid Environmental Assessments (REA) Nautical Charting Route Surveys Shallow Water Hydrographic Surveys 	<ul style="list-style-type: none"> Geological Surveys Geohazard Surveys Buried Object Location Mining/Dredging Surveys Bridge/Shoreline Scour Surveys Pipeline and Cable Location 	<ul style="list-style-type: none"> Geohazard Surveys Geological/Geophysical Surveys Buried Pipeline and Cable Route Surveys Archeological Surveys Military Surveys 	<ul style="list-style-type: none"> Archeological Surveys Geological/Geophysical Surveys Sediment Classification Cable and Pipeline Surveys Pre/Post Dredging Surveys Scour/Erosion Investigation Marine Construction Surveys 	<ul style="list-style-type: none"> Geohazard Surveys Geological/Geophysical Surveys Cable and Pipeline Surveys Route Surveys Archeological Surveys

For more information please visit EdgeTech.com