

4125

SEARCH & RECOVERY SIDE SCAN SONAR SYSTEM

FEATURES

- Ultra high resolution images
- Lightweight for one person deployment
- Easy to setup and operate
- Runs on AC or DC
- Optional quick change tow bracket for ship hull inspections
- Extremely rugged construction
- Stainless steel tow fish
- Dual simultaneous transmit and receive
- WiFi or hard-wire topside/ laptop connection options
- Discover Blue Software designed specifically for SAR Teams

APPLICATIONS

- Search and Recovery
- Port Security
- Hull Inspections



EdgeTech's 4125 -SAR Side Scan Sonar System was designed specifically for the Search & Recovery (SAR) market as a rugged, portable, easy-to-use system that will provide ultra high resolution imagery. The 4125 utilizes EdgeTech's Full Spectrum® CHIRP technology, which provides higher resolution imagery at ranges up to 50% greater than standard non-CHIRP systems. This translates into more accurate results and faster surveys, both critical components of SAR missions.

The 4125-SAR System comes with a 600/1600 kHz dual simultaneous frequency towfish that are both suited for SAR applications, providing an excellent combination of long range search capability and ultra high resolution images for detection of very small objects. EdgeTech's dual simultaneous transmit and receive operations enhance the potential for sonar target shadowing and therefore improves successful search and recovery operations. Additionally, it allows operators to run a lower frequency (larger ranges) to see possible targets along sequential track lines.

The system can be powered by both AC and DC for added versatility and is delivered in portable rugged cases for ease of transport from site-to-site. As is standard with all of EdgeTech's towed side scan systems, the 4125 comes with a safety recovery system which will prevent the loss of a towfish if it becomes snagged on an obstacle during a survey.

EdgeTech's easy-to-use Discover Blue acquisition software is included with the system as standard and includes both Target Logger and Coverage Mapper modules. Discover Blue is designed for ease of use specifically for SAR Teams.

A standard 4125-SAR System comes with a rugged stainless steel towfish and a portable water resistant topside processor including a splash-proof, drop & shock resistant laptop computer. A 30m and 100m Kevlar tow cable is included as standard with customer-specified lengths also available.



For more information please visit EdgeTech.com

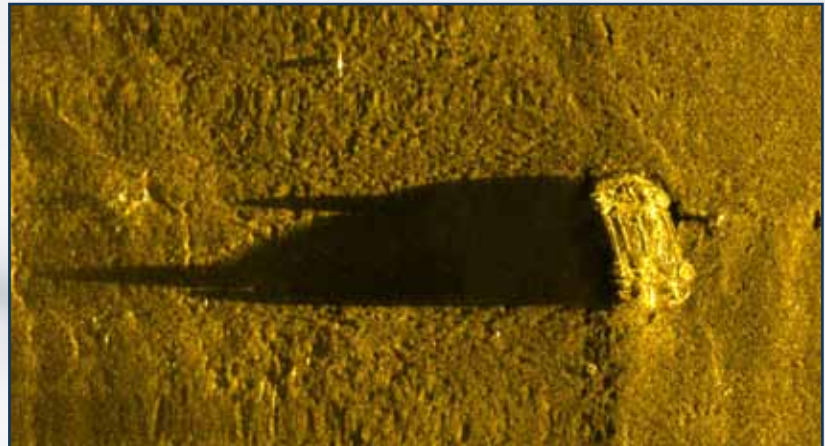
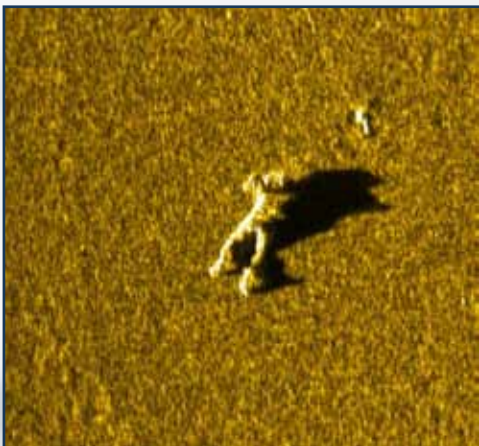
info@EdgeTech.com | USA 1.508.291.0057

4125

SEARCH & RECOVERY SIDE SCAN SONAR SYSTEM

KEY SPECIFICATIONS

SONAR	
Frequencies (Dual Simultaneous)	600/1600 kHz
Pulse Type	EdgeTech's Full Spectrum® CHIRP
Operating Range	120m @ 600 kHz, 35m @ 1600 kHz
Horizontal Beam Width	0.33° @ 600 kHz, 0.20° @ 1600 kHz
Vertical Beam Width	50°
Resolution Across Track	600 kHz: 1.5 cm, 1600 kHz: 0.6 cm
TOWFISH	
Material	Stainless Steel
Diameter	9.5 cm (3.75 inches)
Length	112 cm (44 inches)
Weight in Air	20 kg (44 pounds)
Standard Sensors	Roll, Pitch, Heading, Pressure (Depth)
Depth Rating	200m
Tow Cable	50m Kevlar cable included, customer-specified lengths also available
SPLASH-PROOF TOPSIDE PROCESSOR	
Power Input	12-24 VDC or 115/230 VAC, 50/60 Hz
Connections	AC, DC, Ethernet (to laptop), Towfish
Hardware	Laptop Computer (Optional: Splash Proof/Ruggedized Laptop)
Operating System	Windows® 7 or Windows® 10
Acquisition Software	EdgeTech DISCOVER Blue for SAR Operations
SYSTEM OPTIONS	
Quick change tow bracket for ship hull inspections, keel weight, v-fin depressor wing, pole mount	



For more information please visit EdgeTech.com

info@EdgeTech.com | USA 1.508.291.0057