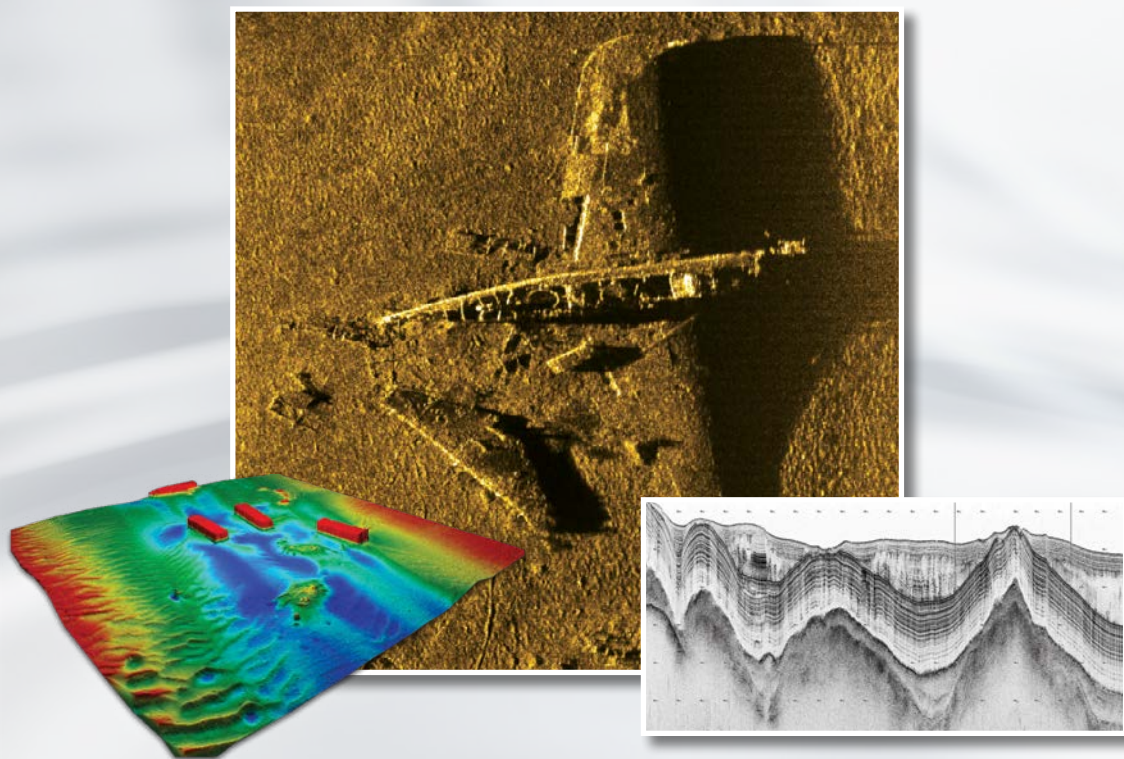


CLEARLY SUPERIOR IMAGING

SIDE SCAN SONAR | SUB-BOTTOM PROFILERS | BATHYMETRY
COMBINED & CUSTOMIZED SONAR SOLUTIONS

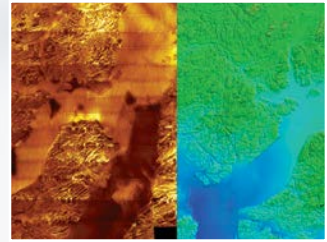
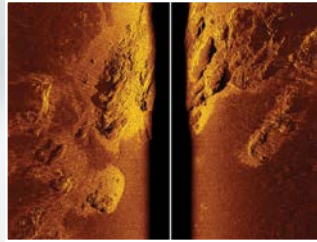
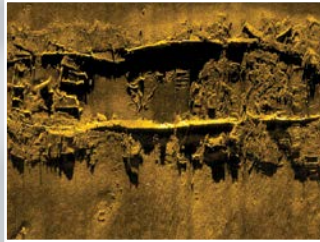


EdgeTech

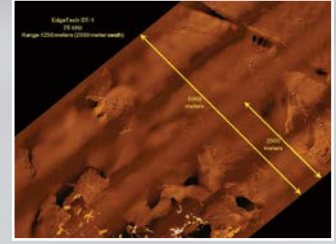
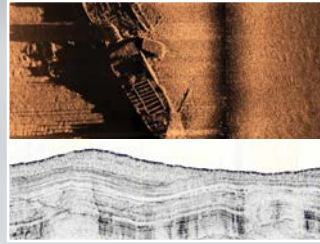
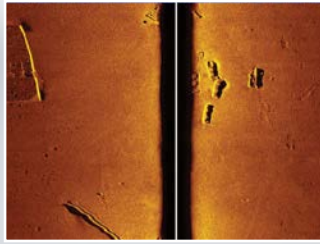
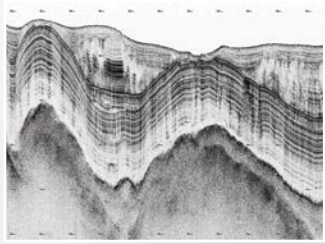
The Leader in Underwater Technology

Acoustic Releases | USBL | MRU | Side Scan Sonar | Sub-bottom Profilers | Bathymetry | AUV & ROV Sonars | Combined & Customized Solutions

UNDERWATER ACOUSTIC IMAGING



Model Name	4125 Ultra High Resolution Lightweight, Portable	4205 Multipurpose Survey System	6205 ^S Swath Bathymetry & Side Scan Sonar
Side Scan Sonar	√	√	√
Sub-bottom Profiler			
Bathymetry (3-D)			√
Frequency Options Available	400 kHz/900 kHz 600 kHz/1600 kHz	Tri-frequency versions: • 120/410/850 kHz • 230/540/850 kHz Multi-pulse/Motion Tolerant versions: • 120/410 kHz • 230/540 kHz • 230/850 kHz	550/1600 kHz (Dual Frequency Side Scan with 550 kHz Bathymetry Data) 550/850 kHz (Dual Frequency Side Scan with 550 kHz Bathymetry Data) 230/550 kHz (Dual Frequency Side Scan with 550 kHz Bathymetry Data) 230/550 kHz (Dual Frequency Side Scan with 230 kHz Bathymetry Data)
Depth Rating (meters)	200 m	2000 m	100 m
Multi-Pulse Option Available		√	
Dynamic Focusing Long Range and High Resolution			
Configurations available:			
Towfish	√	√	
Pole Mount	√	√	√
Sample Applications:	<ul style="list-style-type: none"> • Hydrographic Surveys • Geological Surveys • Search & Recovery • Channel/Clearance Surveys • Bridge/Pier/Harbor Wall Inspection • Hull Inspections 	<ul style="list-style-type: none"> • Hydrographic Surveys • Archeological Surveys • Cable and Pipeline Surveys • Geohazard Surveys • Geological/Geophysical Surveys 	<ul style="list-style-type: none"> • Benthic Habitat Mapping • Dredging Operations • Marine Debris Search • Military Rapid Environmental Assessments (REA) • Nautical Charting • Route Surveys • Shallow Water Hydrographic Surveys



3400/3300 Sub-bottom Profiler Towed, Pole-Mount, Hull-Mount, Portable	2200/2205 Sonars for ROV, AUV, USV	2300 Combined Side Scan Sonar & Sub-bottom Profiler (with Optional Bathymetry)	2400 / Specials Deep Tows
✓	✓	✓	✓
✓	✓	✓	✓
✓	✓	✓	✓
500 Hz-24 kHz	Side Scan Sonar: 75 kHz to 1600 kHz Sub-bottom Profiler: 500 Hz to 24 kHz Bathymetry: 230 kHz or 550 kHz	Side Scan Sonar Tri-frequency: 120/410/850 kHz or 230/550/850 kHz Sub-bottom Profiler: 1-10 kHz and 2-16 kHz Bathymetry: Optional 230 kHz or 550 kHz	Side Scan Sonar: 75 kHz to 1600 kHz Sub-bottom Profiler: 500 Hz to 24 kHz Bathymetry: 230 kHz or 550 kHz
towfish 100 m, survey 6000 m	options to 6000 m	2000 m (3000 m optional)	options to 6000 m
	✓		✓
	optional		optional
✓		✓	✓
✓, hull-mount available			
<ul style="list-style-type: none"> • Geological Surveys • Geohazard Surveys • Buried Object Location • Mining/Dredging Surveys • Bridge/Shoreline Scour Surveys • Pipeline and Cable Location 	<ul style="list-style-type: none"> • Geohazard Surveys • Geological/Geophysical Surveys • Buried Pipeline and Cable • Route Surveys • Archeological Surveys • Military Surveys 	<ul style="list-style-type: none"> • Archeological Surveys • Geological/Geophysical Surveys • Sediment Classification • Cable and Pipeline Surveys • Pre/Post Dredging Surveys • Scour/Erosion Investigation • Marine Construction Surveys 	<ul style="list-style-type: none"> • Geohazard Surveys • Geological/Geophysical Surveys • Cable and Pipeline Surveys • Route Surveys • Archeological Surveys

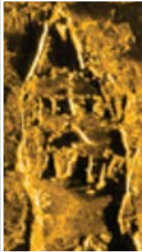
For more information please visit EdgeTech.com

info@edgetech.com | USA 1.508.291.0057

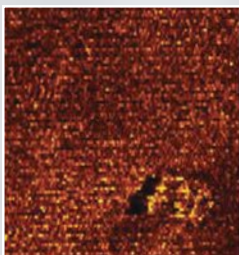
WHAT SETS EDGETECH APART?

ADVANCED TECHNOLOGY PROVIDING CLEARLY SUPERIOR IMAGING

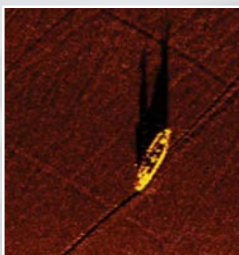
TRADITIONAL METHODS AND RESULTS:



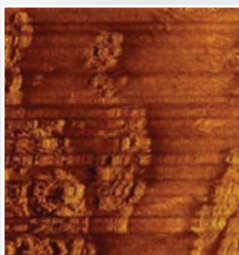
Continuous Wave (CW) Pulse



Single Pulse

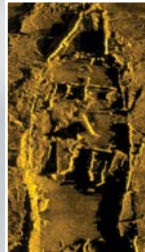


Non-Dynamically Focused

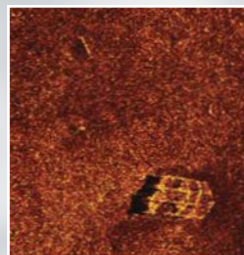


Yaw Effects

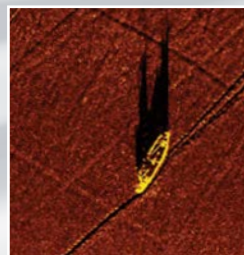
EDGETECH TECHNOLOGY AND RESULTS:



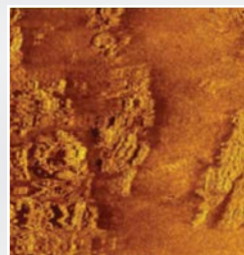
Full Spectrum CHIRP



Multi-Pulse



Dynamically Focused



Motion Tolerant

EdgeTech is the industry leader in the design and development of advanced imaging sonar systems. Only EdgeTech offers a set of unique and exciting underwater imaging technologies including Full Spectrum® CHIRP Processing, Multi-Pulse technology, Dynamic Aperture and Dynamically Focused Arrays. Our proprietary Full Spectrum® CHIRP Processing enhances long range resolutions through improved signal-to-noise ratios. Multi-Pulse technology puts multiple pulses in the water simultaneously, thereby enabling either a survey speed increase over conventional side scan sonar systems, or a marked increase of pings on target, which leads to superior feature detection. EdgeTech's exclusive Dynamically Focused Arrays sharpen resolutions in the far field and enable better target identifications at longer ranges.

In addition to these pioneering technologies, our expertise in telemetry, compact & low-power electronics, modular designs and software programming allows us to provide unique and tailored solutions for platforms that include towed bodies, powered towed bodies, remotely operated vehicles (ROV), unmanned surface vehicles (USV), and unmanned underwater vehicles (UUV). We also have vast knowledge of acoustic positioning, navigation and control technologies that can easily be incorporated into any of EdgeTech solutions. For side scan sonar, sub-bottom profiling, and bathymetric solutions, either individually or in combinations, EdgeTech provides *Clearly Superior Imaging*.