

2400 SERIES

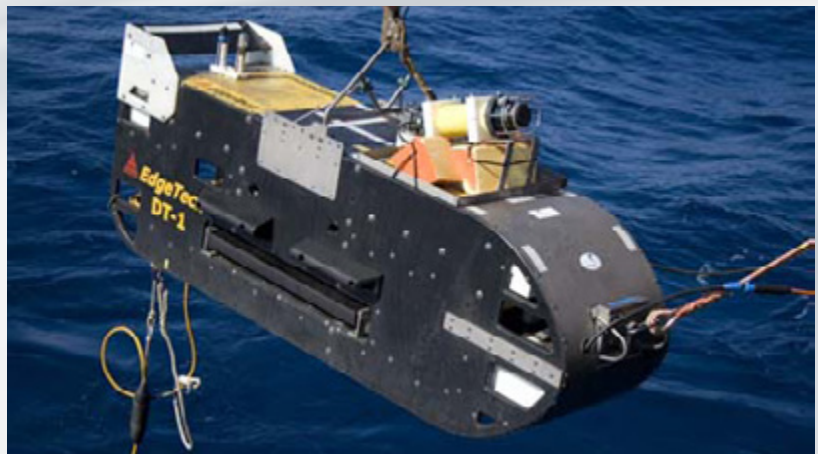
DEEP TOWED SIDE SCAN SONAR/ BATHYMETRY & SUB-BOTTOM PROFILING SYSTEM

FEATURES

- Fully integrated turnkey system
- Digital telemetry over single coaxial or fiber optic tow cable
- Analog & digital channels for user-supplied sensors
- Built-in heading, pitch and roll sensors
- Plug 'n' Tow™ factory tested optical sensors available

APPLICATIONS

- Geohazard Surveys
- Geological/Geophysical Surveys
- Cable and Pipeline Surveys
- Route Surveys
- Archeological Surveys

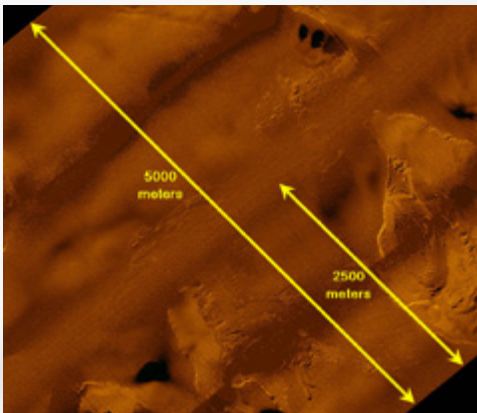


EdgeTech's 2400 Series is a fully integrated combined side scan sonar (with optional wide swath bathymetry) & sub-bottom profiling system designed for deep water operation in depths down to 6,000 meters.

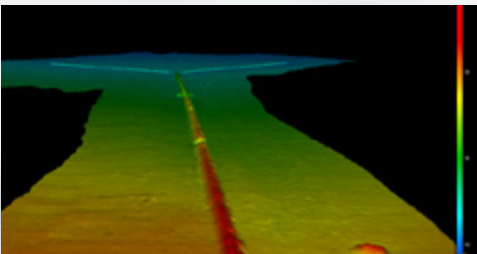
The 2400 can be completely configured by the user to best suit the applications at hand. The system comes with a dual simultaneous frequency side scan sonar with a choice of 75 kHz, 120 kHz or 410 kHz frequencies; any of which can be paired together. The 2400 also comes with the choice of a wideband sub-bottom profiler. Frequency options for the sub-bottom profiler are 1-10 kHz, 2-16 kHz or 4-24 kHz. In addition the system can be configured with wide swath MPES bathymetry.

A multitude of additional optional sensors can also be integrated with the 2400 System for additional data collection. Many of these sensors are Plug 'n' Tow™ which means they have been tested by EdgeTech and the product manufacturer to ensure that both systems will work seamlessly together. Some typical Plug 'n' Tow™ sensors include magnetometer, USBL acoustic tracking system, swath bathymetry, CTD, motion sensing, etc. with others also available.

A standard 2400 System comes complete with a 19" rack mount topside processor, EdgeTech's DISCOVER acquisition software, aDT-2towfish and a customer-specified length of coaxial or fiber optic tow cable.



EdgeTech DeepTow 75kHz image. 5000 meter swath comprised of 2 adjacent 2500m lines (1250 meters per side per line)



EdgeTech MPES Bathymetry Pipeline Image

For more information please visit EdgeTech.com

info@EdgeTech.com | USA 1.508.291.0057

2400 SERIES

DEEP TOWED SIDE SCAN SONAR/ BATHYMETRY & SUB-BOTTOM PROFILING SYSTEM

KEY SPECIFICATIONS

SIDE SCAN SONAR	DW-75/410	DW-120/410	
Frequency (dual simultaneous CHIRP)	75 & 410 kHz	120 & 410 kHz	
Operating Range	75 kHz: 1250 m/side 410 kHz: 150 m/side	120 kHz: 500 m/side 410 kHz: 150 m/side	
Horizontal Beam Width (1-way @-3dB)	75 kHz: 1.3° 410 kHz: 0.75°	120 kHz: 1.1° 410 kHz: 0.75°	
Vertical Beam Width (1-way @-3dB)	75°		
Along Track Resolution	75 kHz: 8.2m @500m 410 kHz: 0.94m @100m	120 kHz: 4.15m @300m 410 kHz: 0.94m @100m	
Across Track Resolution	75 kHz: 10 cm 410 kHz: 1.8 cm	120 kHz: 6.25 cm 410 kHz: 1.8 cm	
Depression Angle	10° to 20° from horizontal, adjustable		
BATHYMETRY			
MPES Wide Swath Bathymetry	Various frequency options available. Please call for details.		
SUB-BOTTOM PROFILER	DW-106	DW-216	DW-424
Frequency Band	1-10 kHz	2-16 kHz	4-24 kHz
Resolution	9-25 cm	6-10 cm	4-8 cm
Penetration in coarse sand	20	6	2
Penetration in clay	200	80	40
TOWFISH		DT-2	
Length	338 cm (133")		
Width	91 cm (36")		
Height	122 cm (48")		
Weight in Air	998 kg (2,200 lbs.)		
Weight in Saltwater	Positively buoyant		
Depth Rating	6,000m		
Options	Depressor, 50 meter umbilical, emergency recovery system (acoustic release, RDF, strobe light)		
TOPSIDE PROCESSOR			
Hardware	19" Rack 3U		
Operating System	Windows		
Display	Dual 23" high resolution flat panel monitors		
Archive	DVD-R/W and/or LAN connection		
File Format	Native JSF or XTF for side scan, SEG-Y for sub-bottom		
Output	Ethernet		
Power Input	105-230 VAC auto sensing, 50-60 Hz		
TOW CABLE			
Type	Coaxial or fiber optic		
Max Length	10,000m for coaxial, no limit on fiber optic		
SYSTEM OPTIONS	Magnetometer, multi-beam swath bathymetry, CTD, motion sensing, USBL acoustic tracking system, custom sensors		

For more information please visit EdgeTech.com

info@EdgeTech.com | USA 1.508.291.0057